



THE FUTURE OF MENTAL HEALTH



OREGON IS AT A MENTAL HEALTH CROSSROADS.

Behavioral health systems in Oregon are at a breaking point. Emergency rooms and jails are filled with people in crisis. Rental costs keep rising, while supportive housing remains underfunded and sparse. Staff shortages and outdated funding models put unsustainable pressure on service providers. People with the most significant needs—those requiring housing and care—are often left with nowhere to turn.



TOGETHER WE CAN CHANGE THE NARRATIVE.

Since 1977, New Narrative (formerly Luke Dorf) has worked to dismantle the barriers that keep people with serious mental health challenges on the margins of society. We meet each person where they are—with housing, care, lived experience, and compassion—and walk alongside them toward stability, purpose, connection, and wellness.

In Oregon, thousands of people with serious mental health needs are stuck in an endless cycle: hospital to houselessness to jail and back again. At New Narrative, we break that cycle with integrated services that matter.

We've helped people who've been pushed to the margins find a path forward. We meet them without judgment.

We listen and we stay. Not just until a crisis passes—but until recovery takes root. We believe that no matter a person's diagnosis, history, or income, they deserve the chance to thrive—not just survive.



OUR IMPACT

- ✓ 84 licensed residential treatment beds across 13 facilities, with three new programs launched in the last 15 months alone.
- ✓ 400+ individuals housed through transitional and supportive housing programs.
- ✓ 1,000+ hours of peer-delivered support annually to help people remain stable in the community, with help.
- ✓ 40 locations integrated into neighborhoods across metro Portland—embedded care where people live.
- ✓ Whole-person support, from an in-house pharmacy to vocational coaching, to food services.

Our participants are adults facing the greatest barriers—chronic houselessness, complex mental health challenges, poverty, and stigma. Whether someone is exiting the Oregon State Hospital or sleeping in a doorway downtown, we meet them with wraparound care and a belief in their future. We do whatever it takes—because lives depend on it and their futures matter.

OUR WORK IN ACTION



2,000+ people
receive services



400+ are housed
safely & sustainably



40+ sites in
metro Portland

WHAT SETS NEW NARRATIVE APART

- ✓ **Integrated Model:** We combine housing, clinical services, and peer support into one system of care.
- ✓ **High-Acuity Expertise:** We specialize in serving individuals with the most complex behavioral health needs.
- ✓ **Rapid Implementation:** We've proven we can open and staff new facilities quickly—because people can't wait.
- ✓ **Advocacy for Systems Change:** We don't just deliver services. We push for policies that support long-term solutions, fair pay for staff, and sustainable contracts.
- ✓ **Participant Voices at the Center:** Every program is informed by lived experience, and designed together with the people we serve.



THE FUTURE WE'RE BUILDING >>

We aren't just responding to crisis. We're designing a new system.

New Narrative is at the forefront of leading a strategic shift in Oregon—working to ensure that everyone seeking mental health care can access housing and support when they need it.

This is our bold goal: no one falls through the cracks.

To get there, we are:

- Expanding programs that meet people where they are
- Modernizing infrastructure to increase efficiency and access
- Advocating for policy change to make funding fairer and more sustainable
- Investing in our workforce to become a destination workplace for mental health professionals

But we cannot do this work alone.

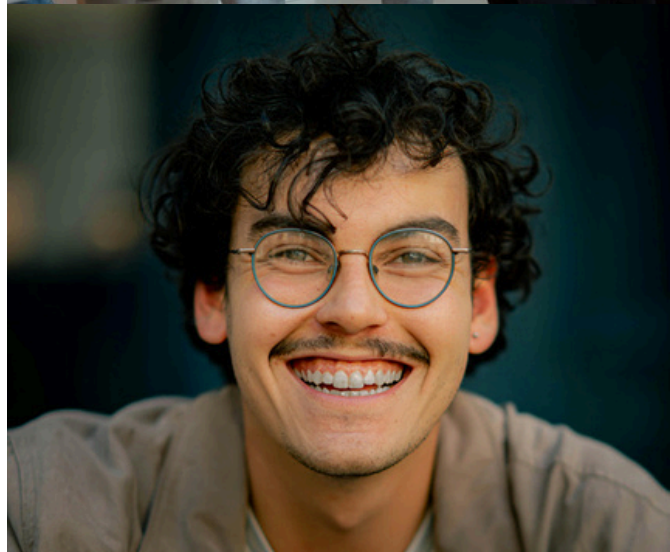


WE NEED YOU...HERE'S WHY

Most of New Narrative's programs are funded by public contracts that don't always cover the full cost of care. They may not buy furniture, fix a roof, or fund street outreach to someone who needs a helping hand but can't find the words to ask for help.

YOUR INVESTMENT HELPS US

- ✓ Fund critical gaps in housing and staffing where contracts fall short
- ✓ Renovate aging facilities to ensure safety, dignity, and warmth
- ✓ Provide essentials like meals, hygiene kits, transit passes, and vans
- ✓ Launch innovative peer-led partnerships that empower recovery
- ✓ Invest in our workforce with fair wages, staff training, and technology that support care delivery
- ✓ Tell our story and share why success matters—to lift stigma, build understanding and stability, and resource the future



A NEW NARRATIVE FOR MENTAL HEALTH IS KEY TO A HOPEFUL FUTURE.

Because of you, someone with nowhere left to turn will find shelter—and a team that believes in them.

Because of you, a young adult aging out of foster care will move into stable housing and begin to dream about their future.

Because of you, someone who has lived with chronic schizophrenia will finally have a key to their own apartment—and the daily support they need to stay there.

With your help, we will build a future that reflects Oregonians' shared values of dignity, equity, and hope for generations to come.

Please consider supporting our work with a gift today.

CONTACT

Cheryl Franceschi, Director of Development

(503) 501-5312

CFranceschi@NewNarrativePDX.org

NewNarrativePDX.org

