

2022 ANNUAL REPORT

Tools to Thrive, Not Just Survive



**NEW
NARRATIVE™**

Integrative Mental Health

LETTER FROM OUR CEO

Friends, it has been a challenging few years. Covid has shown a bright spotlight on what we in mental health services have known for a long time: [houselessness and mental health are urgent issues which affect our entire community](#). Individuals have sought mental health care in greater numbers during the pandemic, and we have responded. For forty-five years New Narrative has risen to meet the mental health and housing challenges facing the Portland metro community. At the heart of our commitment, our mission has never wavered - to provide resources [so people seeking mental health care can develop the tools to thrive, not just survive](#).

In 2022, despite the ongoing challenges brought on by the pandemic, we were able to serve [3,359 participants](#) with integrated clinical, housing, peer support, and other essential services necessary for whole-person care, setting them up for success. This would not have been possible except for our frontline staff and leaders across the organization, who continued to do this work with deepest compassion and commitment.

[With great challenges come great opportunities](#), and we find ourselves at a pivotal point of tremendous change and growth. We understand the gravity of this moment, and we are making intentional investments in our growth as an organization and in our ability to serve. We have leaned heavily into systems-changing strategies to steer New Narrative toward a more equitable model. This includes embracing the spirit of innovation by embracing human-centered models of care. Our growth is also supported by a cultural transformation to break down power differentials. We want to foster an environment where staff not only work shoulder-to-shoulder with participants but also with one another, with every voice heard and each person respected. Finally, our strategy and advocacy reflect our belief in supporting the whole person by addressing all Social Determinants of Health. [By driving these strategies we will be one step closer to a future where everyone seeking mental health support can find a safe place to live,](#)

[build lasting relationships, and find meaningful integration within communities.](#)

I invite you to read on and learn more about our work through the stories featured in our annual report. [Join us as we build a new narrative for mental health!](#)

In partnership,

Julie Ibrahim
Julie Ibrahim

CEO - New Narrative, she/her



OUR STORY



Developing the tools to **Thrive**

New Narrative specializes in addressing the complex needs of individuals with mental health concerns and interrupting the cycle of poverty and stigma, so participants may find stability and recovery. Our goal is to ensure people seeking mental health care can develop the tools to thrive, not just survive.

We operate in 39 sites across the Portland metro region in Oregon. In 2022, New Narrative served 3,359 participants with various mental health needs, providing housing and wraparound services.

“New Narrative is serious about racial equity and doing the work to broaden the landscape for those seeking services.”

Jamey McDonald,
Interim Board Chair

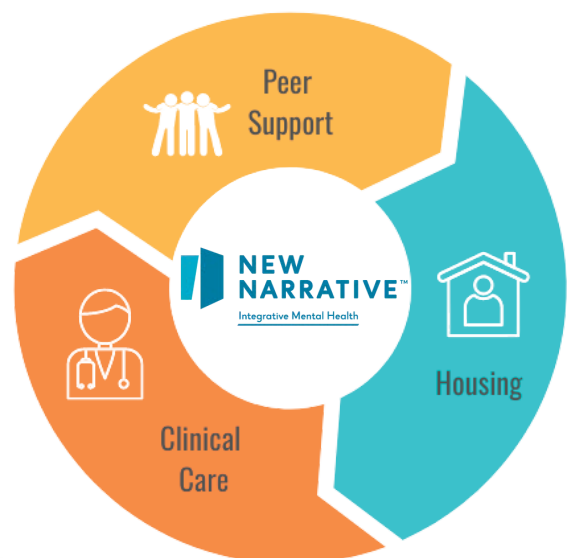


“Witnessing the transforming power of putting the individual first in their care is one of our greatest sources of pride.”

Kascadere Causeya
Vice Board Chair



- 1,746** Participants received mental health services
- 4** Peer support programs dedicated to peer engagement
- 24** Hour staffing services available for participants in residential treatment locations
- 46%** Of New Narrative staff survey respondents reported lived experience with mental health conditions
- 27** Residential facilities, including two opened in 2022 alone
- 350** Participants were reached through peer services



**New Narrative Model
of Integrative Care**

2022 AT A GLANCE

This year New Narrative received **21,200+ Unique Clinical Visits** from and spent **11,371 Hours** in visits with participants.



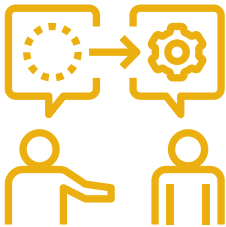
400 Participants Housed

in permanent, family, or transitional housing at New Narrative's residential properties. Properties like this 35-bed transitional housing property in Portland which opened in 2022.



70 Participants Received Employment

opportunities and/or mentorship. This means participants like NorthStar Clubhouse member Matthew have received employment skills and training and work experience in 2022.



"It's been a positive experience being able to work again after 18 years," he says about his employment at Ross Dress for Less. "It gives me something productive to do in my spare time besides being isolated."



35 Peer Professionals

are on staff at New Narrative. New Narrative also welcomed a Vice President of Peer Services in April 2022.



LIVING TO THRIVE

“ I became disabled in 2010. After not working for 11 years, I obtained my CRM (Certified Recovery Mentor), and PSS certificates. I came to New Narrative and applied for a position as a residential counselor to help people in recovery like myself.

I've always had a goal to help people like myself in the recovery community obtain sobriety and be an example that my peers can look to for support and guidance.”

-New Narrative Staff Member



Equity & Inclusion



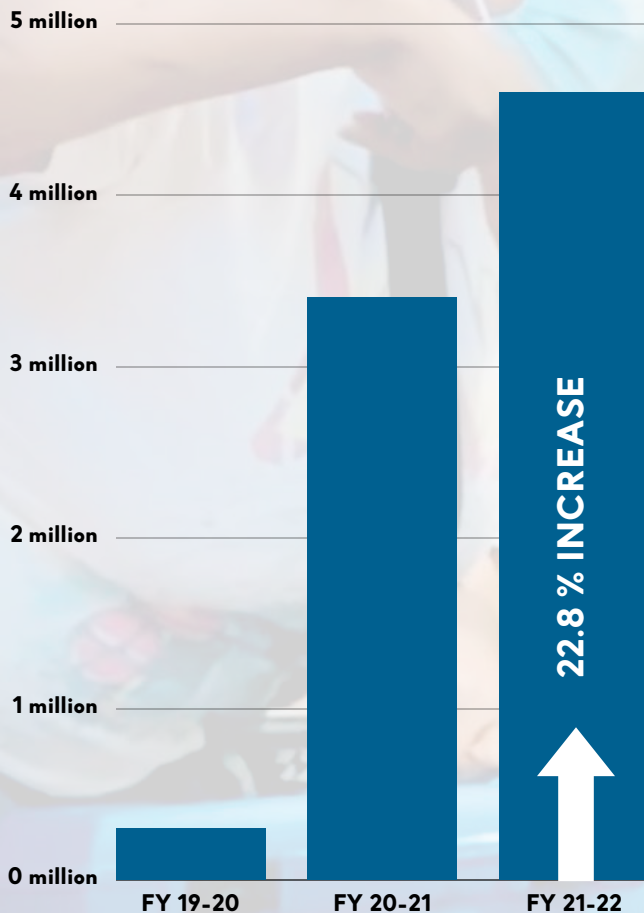
At New Narrative, we believe in creating space and elevating voices that have traditionally been excluded. This year, we assembled our first Equity Team composed of internal staff. This team created an organization-wide Equity Statement as the first step in our equity and inclusion strategy.

You may read the Equity Statement on our website at <https://tinyurl.com/NNEquity>. We will continue to dedicate resources to ensure that New Narrative is a safe, welcoming space for everyone.



2022 FINANCIAL SUMMARY

REVENUE GROWTH



REVENUES & SUPPORT

CURRENT ASSETS

-Government Grants & Contracts	9,907,756
-Fee for Service	9,830,930
-Rental Income	1,774,927
-Contributions	285,487
-Pharmaceutical sales, net of related expenses of \$3,041,559 in 2022	289,527
-Conditional grants recognized	97,648
-Other government grant - Paycheck	
-Protection Program	2,105,597
-Other income	200,105
-Net assets released from restrictions: Satisfaction of purpose restrictions	340,480

TOTAL NET SUPPORT & REVENUE 24,832,457

OBLIGATIONS

OPERATING EXPENSES

-Auxiliary Services	3,948,702
-Clinical Services	4,271,733
-Management & General	5,023,413
-Peer Services	1,781,161
-Residential Treatment	8,111,631

TOTAL OPERATING EXPENSES 23,136,640

New Narrative has experienced exponential growth in the past three years. As an organization traditionally reliant on a fee for service model, we have focused on diversifying our funding streams as we continue to meet the growing mental health needs in our community. We are ever grateful for the donors whose support increases our ability to do the work that we do.

Note: this information is derived from audited financial statements which are available upon request.

THANK YOU

On behalf of our staff, participants, and the community, we honor and recognize the generosity of our donors and partners who ensure our participants have access to the resources to be able to develop tools to thrive, not just survive. We recognize all at or above the \$500 level.

MAJOR DONORS

SENTINEL (\$100,000 AND ABOVE)

Benevity Impact Fund

PROTECTOR (\$5,000 - \$9,999)

Joseph Weston Foundation

Mr. Robert B. and Sara H. Rothschild

Mr. Charles Nitchie

SE Uplift Neighborhood Program

HERO (\$1,000 - \$4,999)

David A. Kaplan and Karen Oehler

Deanna Nebert

Dr. David and Mary K. Peaslee

Janelle and Chris Kent

Lynn Boose

Marilyn and Tom Fink

Scott Edwards Architecture

Target Circle Guest Giving Program

Thurman Family Charitable Trust

AMBASSADOR (\$500 - \$999)

Alexander Meub

Carol Greenough

CW Gerig

Donald Friedman

Eleven Software

Forest Grove United Church of Christ

Karlene Webster and Jim Webster

Nate Query and Marissa Maier

Talilo Marfil

Washington County

BOARD OF DIRECTORS

Jamey McDonald, Chair

Commander, City of Tigard Police Department

Kascadere Causeya, Vice Chair

Program Manager, Central City Concern

Dr. David Peaslee, Secretary

Ret. ER Physician, Providence St. Vincent Hospital

Bob Connell

Ret., Transportation Security Agency (TSA)

Debi Mollahan

CEO, Tigard Chamber of Commerce

Ken Kornelis

Psychologist

Angel Prater

Aware Consulting Group

Al Roque

Chief Deputy, Washington County Sheriff's Office

Lynn Boose, Ph.D.

Ex-Officio Member, NorthStar Clubhouse

Kim Marshall

Executive Director, Washington County Project Homeless Connect

A SPECIAL THANKS TO OUR COMMUNITY PARTNERS



YOUR CONTRIBUTIONS CHANGE LIVES.

Make a donation today:

Scan, or text NEWNARRATIVE to 44-321.





**NEW
NARRATIVE™**

Integrative Mental Health

Mission

From clinical care and peer support programs to housing, we provide resources so people seeking mental health care can develop the tools to thrive, not just survive.

Vision

A future where everyone seeking mental health care can live the life they choose.

8915 SW Center Street, Tigard, OR, 97223
www.NewNarrativePDX.org | (503) 726-3690

